

Manual spool valve

Type HSV700

up to 700 bar

NG 6 up to 25 l/min

Features

- For single and double acting systems

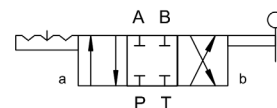


Design

- Minimal weight
- Spool type design
- Ready to install

Applications

- For single and double acting systems
- For direct installation onto hydraulic power units
- Available as CETOP NG 6, for manifold assembly or for in-line mounting.



Technical data

Hydraulic fluid	Mineral oil according to DIN 51524 (other fluids on request)
Fluid temperature range	-20 to 80 °C
Ambient temperature range	-30 to 50 °C
Viscosity range	5 to 400 mm ² /s
Port size	NG 6
Porting	In-line mounting: 3/8"-NPT (A, B, P,T) Assembly: NG 6 to DIN 24340 / ISO 4401 / CETOP RP 121 H
Max. operating pressure connection P,A, B	700 bar
Max. operating pressure connection T	70 bar
Max. flow rate	25 l/min
Pressure loss	See diagramm on page 2
Filtration (recommendation)	Class 17/15/12 according to ISO 4406
Weight	See product informations
Material/surface treatment	Body: anodised aluminum Handle: plastic

Type HSV700

to 700 bar
NG 6 up to 25 l/min

Ordering code

Example	HSV	700	-	6	-	3/2	-	U	-	HR	-	V	-	A		00	
Manual spool valve																	Special design 01 ... 99 (00 for standard)
Type		700															
Porting				6													
Number of ports/positions						3/2 4/2 3/3 4/3											
Functions								see type table									
Operating mode HR								manual operated, detent									
Seal material								V (FPM) other seals on request									
																	Part index Please leave blank (small letters a-d; different letters do not effect interchangeability)
																	Desing revision Capital letters A-Z; identical letters equal same connecting dimensions

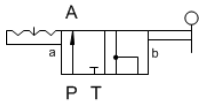
Product information

For in-line mounting

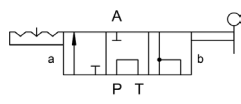
Type	Function	Weight [kg]	Part No.
HSV700-6-3/2-Q-HR-V-A*00	3/2-Q	1,38	3685070
HSV700-6-3/3-G-HR-V-A*00	3/3-G	1,39	3685304
HSV700-6-4/2-J-HR-V-A*00	4/2-J	1,38	3685324
HSV700-6-4/3-H-HR-V-A*00	4/3-H	1,38	3686025
HSV700-6-4/3-E-HR-V-A*00	4/3-E	1,38	3685352
HSV700-6-4/3-U-HR-V-A*00	4/3-U	1,38	3686067
HSV700-6-4/3-J-HR-V-A*00	4/3-J	1,38	3686033

Hydraulic schematics

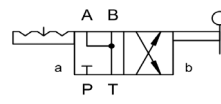
HSV700-6-3/2-Q-HR-V-A*00



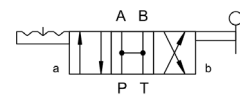
HSV700-6-3/3-G-HR-V-A*00



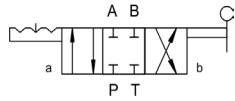
HSV700-6-4/2-J-HR-V-A*00



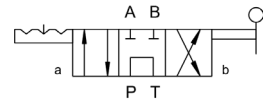
HSV700-6-4/3-H-HR-V-A*00



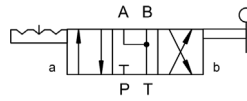
HSV700-6-4/3-E-HR-V-A*00



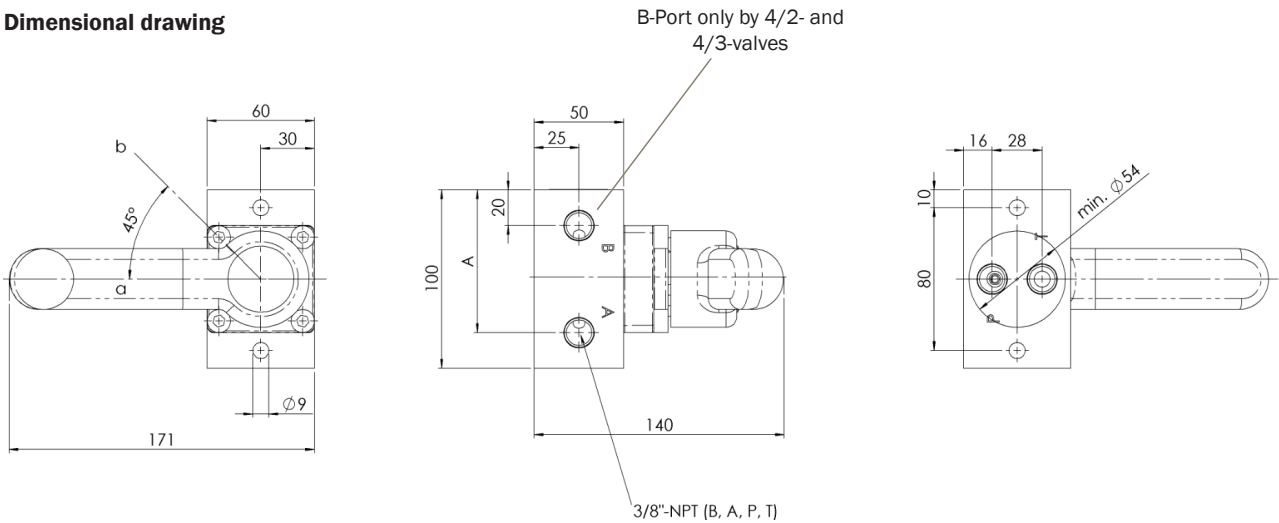
HSV700-6-4/3-U-HR-V-A*00



HSV700-6-4/3-J-HR-V-A*00



Dimensional drawing



	3/2-Q	3/3-G	4/2 and 4/3
A	57.5mm	67.5mm	80mm

Type HSV700

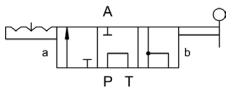
to 700 bar
NG 6 up to 25 l/min

For manifold assembly

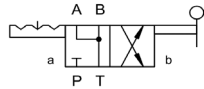
Typ	Function	Weight [kg]	Part No.
HSV700-6-3/3-GB-HR-V-A*00	3/3-GB	1,01	3685072
HSV700-6-4/2-JB-HR-V-A*00	4/2-JB	1,02	3685317
HSV700-6-4/3-HB-HR-V-A*00	4/3-HB	1,01	3685355
HSV700-6-4/3-EB-HR-V-A*00	4/3-EB	1,01	3683546
HSV700-6-4/3-UB-HR-V-A*00	4/3-UB	1,01	3686034
HSV700-6-4/3-JB-HR-V-A*00	4/3-JB	1,01	3686029

Hydraulic schematics

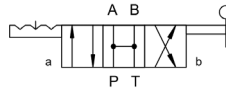
HSV700-6-3/3-GB-HR-V-A*00



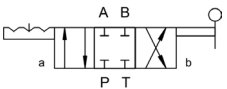
HSV700-6-4/2-JB-HR-V-A*00



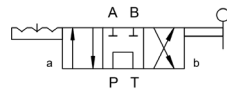
HSV700-6-4/3-HB-HR-V-A*00



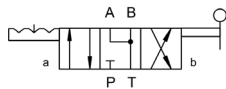
HSV700-6-4/3-EB-HR-V-A*00



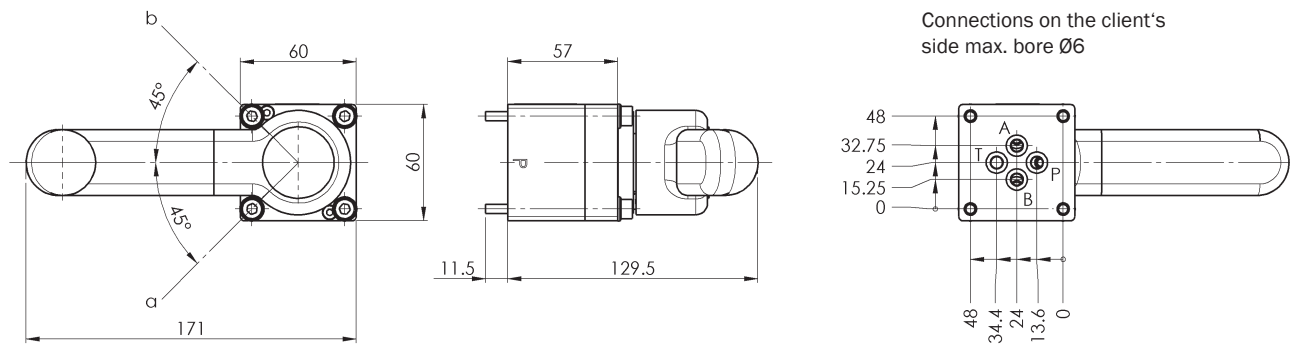
HSV700-6-4/3-UB-HR-V-A*00



HSV700-6-4/3-JB-HR-V-A*00



Dimensional drawing

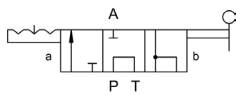


For CETOP connection

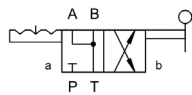
Type	Function	Weight [kg]	Part No.
HSV700-6-3/3-GC-HR-V-A*00	3/3-GC	1.41	3685301
HSV700-6-4/2-JC-HR-V-A*00	4/2-JC	1.41	3685319
HSV700-6-4/3-HC-HR-V-A*00	4/3-HC	1.40	3685982
HSV700-6-4/3-EC-HR-V-A*00	4/3-EC	1.41	3685349
HSV700-6-4/3-UC-HR-V-A*00	4/3-UC	1.41	3686065
HSV700-6-4/3-JC-HR-V-A*00	4/3-JC	1.41	3686031

Hydraulic schematics

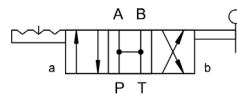
HSV700-6-3/3-GC-HR-V-A*00



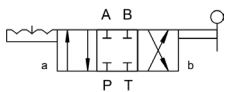
HSV700-6-4/2-JC-HR-V-A*00



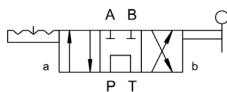
HSV700-6-4/3-HC-HR-V-A*00



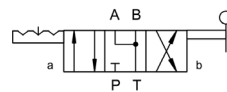
HSV700-6-4/3-EC-HR-V-A*00



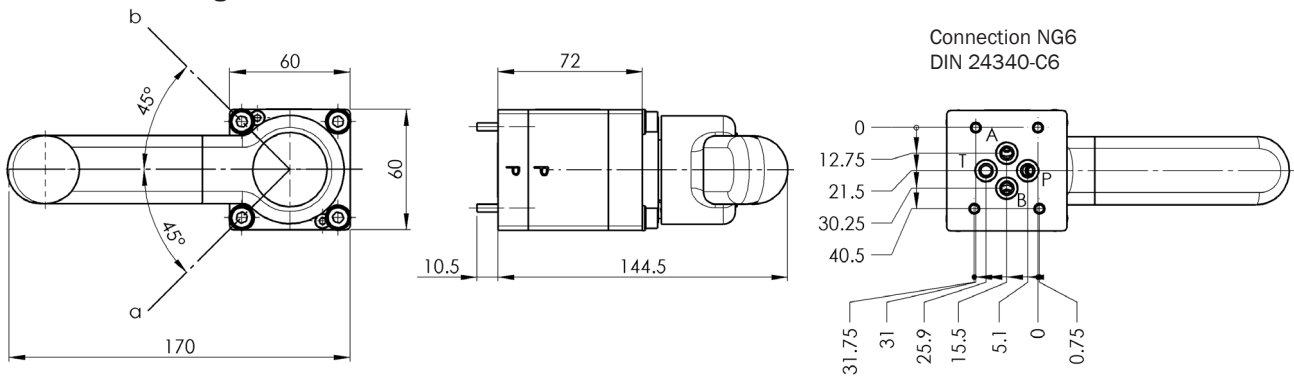
HSV700-6-4/3-UC-HR-V-A*00



HSV700-6-4/3-JC-HR-V-A*00



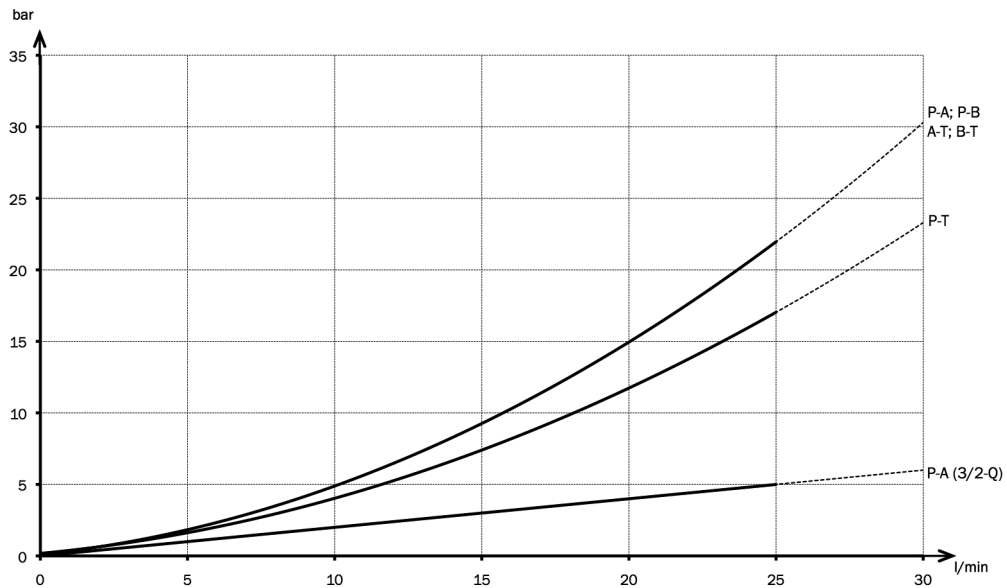
Dimensional drawing



Type HSV700

to 700 bar
NG 6 up to 25 l/min

Characteristic pressure drop HSV700



Bieri Hydraulik AG

Könizstrasse 274
CH-3097 Liebefeld
Tel. +41 31 970 09 09 | Fax +41 31 970 09 10
info@bierihydraulics.com | www.bierihydraulics.com

The information in this brochure relates to the operating conditions and applications described.

For applications and operating conditions not described, please contact the relevant technical department.

Subject to technical modifications.